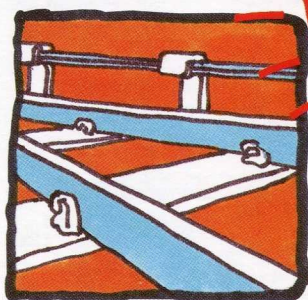
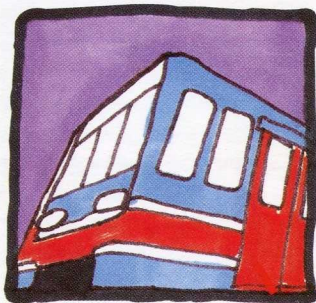
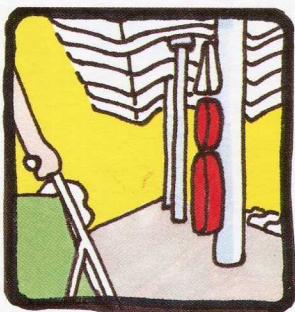


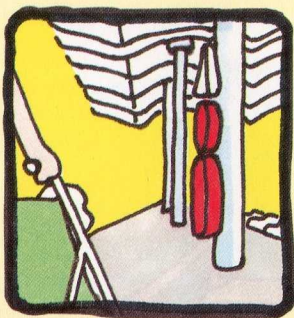
Safe journey



May 1994

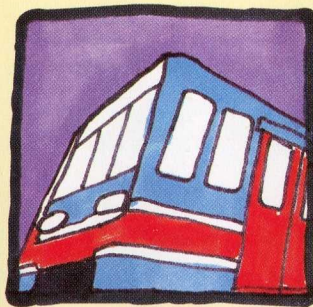
DOCKLANDS
LIGHT RAIL

Help make it safe for everyone



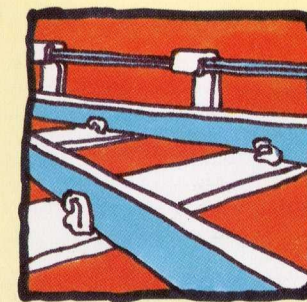
STATIONS

Platforms can seem quiet when you are waiting for the train. Be vigilant and remember that the trains arrive very fast.



TRAINS

Our trains are designed to travel swiftly. Doors close quickly, and a high pitched tone sounds to warn you when the doors are about to open/close. Please hold tight and make sure you stand clear of the doors, and that your clothing and baggage do not get caught.



TRACK

The tracks and electric rails mean danger for everybody. So stay away! We can help each other by reporting holes in fences where animals or children can get through.

We're looking out for your safety too. Check where the passenger alarms are placed on the platform, in case you need assistance. On our new stations between Beckton and Poplar (Platform 4 only), you will find a white automatic train stop button above the alarm which, if pressed in an emergency, will stop an approaching train.

The train stop button will be introduced on the rest of DLR stations later this year. Close Circuit TV helps us

to respond quickly. Always take care not to go too near to the track.

Make sure you -

- Walk and don't run.
- Stay away from the tracks and platform edge.
- Don't interfere with the operation of lifts or escalators.
- Take special care with small children, prams and pushchairs.
- Never skate or ride bikes, or skateboards on the platform.
- Don't drop litter. Other people might slip on it.



Our Train Captains will look after you when you are on board, but look out for the alarm button and speaker in case you need it. Watch out for the automatic doors.

Also,

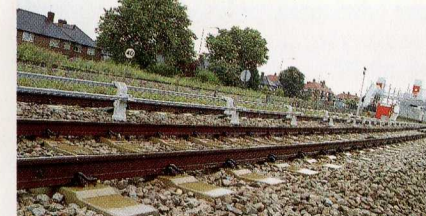
- Mind the gap when you're getting on and off.
- Keep your luggage away from the gangways and with you always.
- Don't lean on doors, keep doorways clear.



- Use the fire extinguishers if there is an emergency.
- Use the specially marked spaces for wheelchairs and prams.



Watch out for all the warning signs telling you about danger on the track. If you trespass near the track you can easily get killed, or cause accidents endangering other people.



- Don't go on to the track even if there is an emergency. Raise the alarm using the passenger alarm by calling a DLR Train Captain or by telephoning 999.
- Never throw objects onto the track.
- Don't walk off the end of the platform onto the track.
- Never try to cross the track
- The electrical rail will kill or badly burn you. Never go near it.
- Don't play on the tracks.





COMMITTED TO SAFETY ON DLR



We all have an interest in safety - each one of us has a part to play. The Docklands Light Railway (DLR) is a new system with many new features to make your journey safe. Above all our personnel are dedicated to providing the best, and safest possible service.

The railway is monitored by CCTV, alarms on the stations are all connected to the Control Centre and we are ready to respond to any emergency. By reading this leaflet to find out what you can do to help, and assist us in maintaining our good safety record.

Some general points

- Unfortunately we cannot allow bikes onto the system unless they are the fold up kind enclosed in a carry case.
- A no smoking policy is strictly in force everywhere on DLR.
- There is a Train Captain on every train and a dedicated team of British Transport Police to help you at any time.



LOOKING AFTER YOUR SECURITY AND SAFETY



Our track record on crime and accidents is impressive. This is partly due to our dedicated "Home Beat" team. These officers, familiar faces to many of you, are each responsible for a particular part of the system. If you want immediate help, or advice on anything about security on DLR, just ask.



*For more information telephone:
071 987 0518*

*If you wish to report anything contact
us on Freephone Crimeline on:
0800 252525*

